

**“tough tech for tough environments“**

## **PA-R-340-7 servo-actuator**

**Pegasus**

Actuators GmbH



### **data sheet - technical specifications**

#### **Supply data:**

Operating voltage: 18 – 32 VDC  
Operating voltage typical: 24 VDC  
Standby current: 40mA

#### **Input signal:**

PWM signal, TTL level (standard)  
PWM signal, differential (RS485 transceiver) (optional)  
or RS485 data protocol (optional)

#### **PWM parameter:**

Frame rate: 2,6 - 1000ms  
Valid pulse length: 1,0 - 2,0ms  
left / center / right: 1,0ms - 1,5ms - 2,0ms

#### **Position feedback:**

analog, differential: 0-5V  
Scale factor: 27.78 mV/deg.

#### **Performance data:**

Maximum torque: > 1800Ncm (> 2540 oz-in.)  
Rated torque<sup>\*\*</sup>: 850Ncm (1200 oz-in.)  
Speed at rated torque: 160°/sec @28 VDC, 140°/sec @24 VDC  
No load speed: 200°/sec @24 VDC, 240°/sec @28 VDC  
Gear train backlash: < 0,5°  
Travel angle: ± 90° (-5%)  
Maximum Travel angle (optional): ± 170° (-5%)  
Slip clutch lock out momentum: >1800Ncm (2540 oz-in.) +20%  
Peak current - short time: 6,5A  
Stall current - continuous: 1,5A (limited)  
Minimum detectable signal step: max 0,25µsec. (adjustable)  
Weight: 750g (26,5 oz)

<sup>\*\*</sup>according to specifications of Pegasus Actuators GmbH

#### **Environmental data:**

Axial load on output shaft < 100N  
Operating temperature: -40°C - +70°C (-40°F - +158°F)  
Storage temperature: -40°C - +80°C (-40°F - +176°F)

#### **Environmental specifications:**

Vibration test: IEC 68-2-6 / EN 60068-2-6  
Shock test: IEC 68-2-32  
Protection class: IP67



DISTRIBUTOR

**Northwest UAV**  
A GLOBAL COMPANY

11160 SW Durham Lane, Suite 1 | McMinnville, OR 97128 USA

+1 503.434.6845

+1 503.217.6080

customerservice@nwuav.com

www.nwuav.com

**“tough tech for tough environments“**

## **PA-R-340-7 servo-actuator**



### ***data sheet - technical specifications***

#### ***Main components:***

##### ***Case:***

IP67 water and dust protected with solid vertical and horizontal 4-point fixation.  
material: CNC machined aluminum, bead blasted and anodized.

##### ***Gear train:***

hardened steel, spur gear type, 8 ball races or roller bearings with PA-SC overload protection output shaft.

##### ***Motor:***

Neodym-magnet BLDC motor, double ball raced.

##### ***Amplifier:***

digital positioning controller

##### ***Sensor travel angle:***

mechanical: 360° (no end stops)  
electrical - (standard):  $\pm 90^\circ$   
electrical - (optional):  $\pm 160^\circ$

##### ***Actuator connector:***

D -Sub male, 9-pin, IP 67

#### ***Applicable documents:***

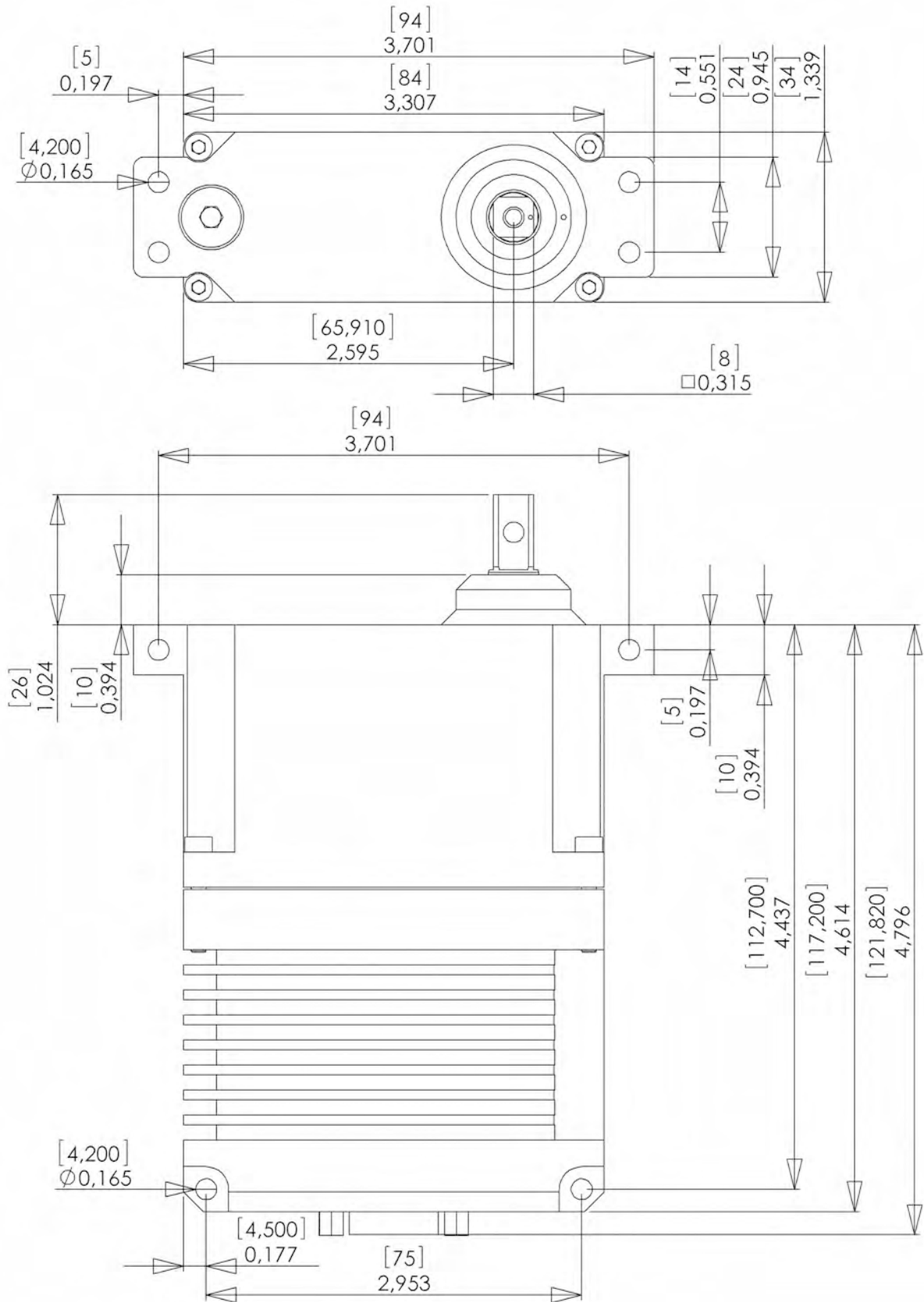
- user manual
- RS485 data protocol documentation
- cable and pin assignment documentation
- endurance test specification
- vibration and environmental test specification

**“tough tech for tough environments“**

**PA-R-340-7 servo-actuator**

**Pegasus**

Actuators GmbH



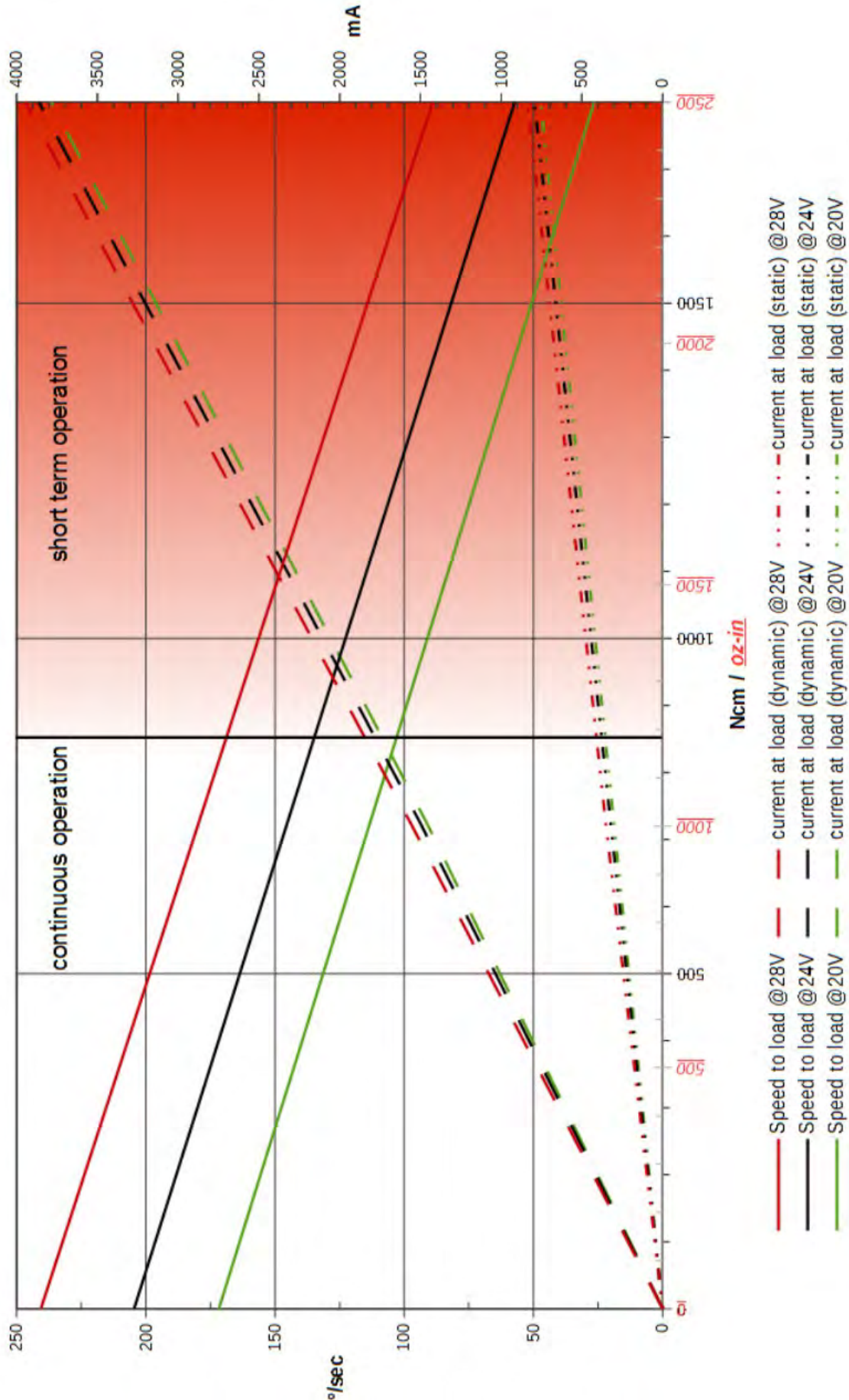
• dimensions are in: [mm]  
inch

**“tough tech for tough environments“**

**PA-R-340-7 servo-actuator**

**Pegasus**

Actuators GmbH



! The overload protection limits the performance of the actuator during overload conditions. !