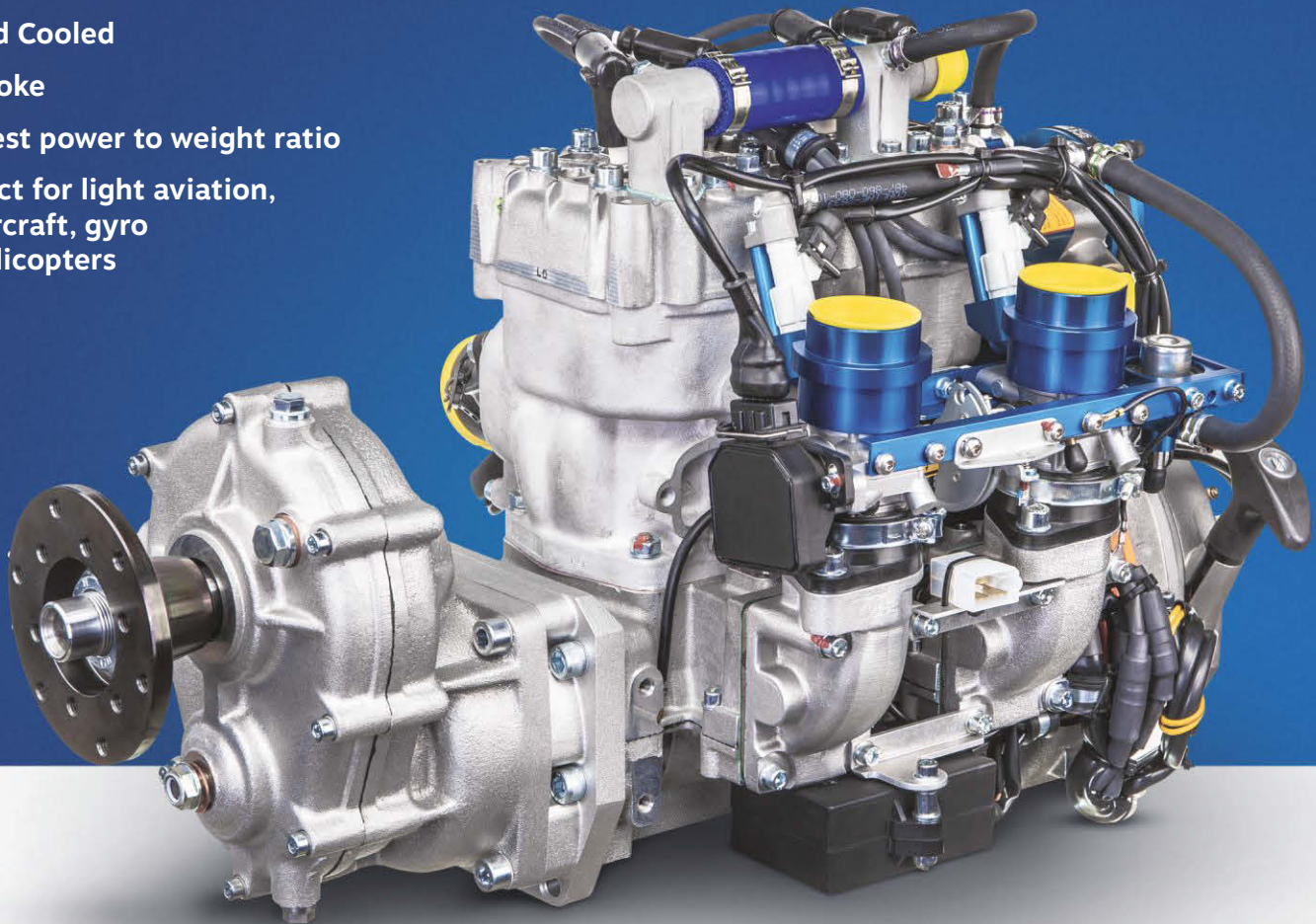


3503, H35

# 35 Series

- 58 or 70 HP
- Liquid Cooled
- 2-Stroke
- Highest power to weight ratio
- Perfect for light aviation, hovercraft, gyro or helicopters



## DESCRIPTION

### Maximum power-to-weight ratio available.

The 35 Series liquid cooled two-stroke engines offer the maximum power-to-weight ratios available in the 70-horsepower market.

Offers an ideal choice for use in light and ultralight aviation, hovercraft, gyro and helicopters and all applications where weight could be an issue.

Offers a time between overhauls of 1000 hours and is well known for its ease of maintenance and exceptional durability.



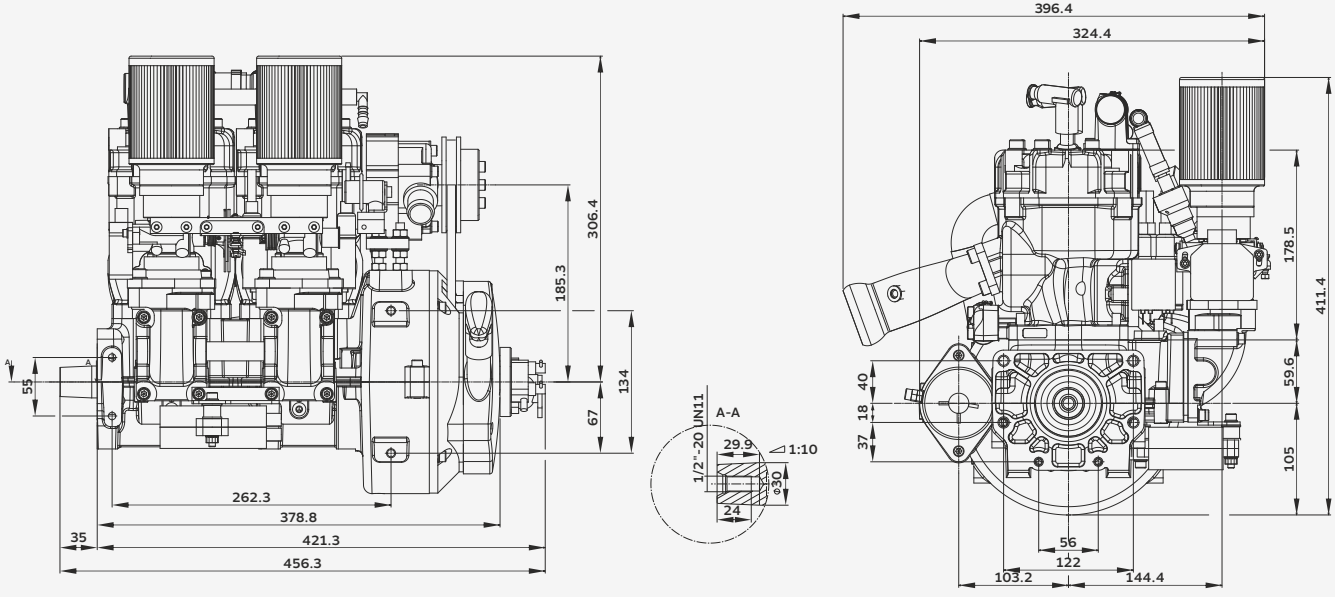
3503, H35



# 35 Series

TECHNICAL SPECIFICATION:

<b>TYPE:</b>	<b>Two cylinder</b> two stroke (inline)	<b>WEIGHT:</b>	<b>36 kg (79,0 lb)</b> with exhaust and water in the engine
<b>DISPLACEMENT:</b>	<b>625 cm<sup>3</sup></b> (38,1 in <sup>3</sup> )	<b>LENGTH:</b>	<b>472 mm</b> (18.58 in)
<b>STROKE:</b>	<b>69 mm</b> (2,72 in)	<b>WIDTH:</b>	<b>410 mm</b> (16.14 in)
<b>BORE:</b>	<b>76 mm</b> (2,99 in)	<b>HEIGHT:</b>	<b>360 mm</b> (14.17 in)
<b>MAX. PERFORMANCE:</b>	<b>52 kW (70 HP)</b> at 6500 rpm (3503) <b>43 kW (58 HP)</b> at 5200 rpm (H35) According DIN 70020	<b>STARTING DEVICE:</b>	<b>Recoil starter</b>
<b>MAX. TORQUE:</b>	<b>77,3 Nm (57 ft.lb)</b> at 6000 rpm (3503) <b>79 Nm (58 ft.lb)</b> at 5000 rpm (H35)	<b>RUNNING DIRECTION:</b>	<b>Counter-clockwise</b> , view to output shaft
<b>CARBURATION:</b>	<b>multi point injection (E)</b> or <b>2x carburetor (V)</b>	<b>COOLING:</b>	<b>Liquid cooling</b>
<b>FUEL MIXTURE:</b>	<b>Mixture 1:50</b> , 2-stroke-oil, fuel min. 95 octane (RON) <b>Mixture 1:80-100</b> with BLUEMAX 2-stroke-oil, fuel min. 95 octane	<b>IGNITION SYSTEM:</b>	<b>CDI</b>



OPTIONS

- Dual ignition
- Gear box G 50 (1:2,16/1:2,29/1:2,59/1:3,16/1:3,65)
- Electric starter
- Separate lubrication

**Hirth is a registered trademark of Hirth Engine GmbH. All rights reserved. This is not a certified aircraft engine!** It has not received the safety and durability testings specified by aircraft standards. It is only for use in uncertified experimental aircraft or vehicles when there is no risk for the safety due to an engine failure. Never fly the aircraft equipped with this engine in circumstances or in areas, in weather-conditions or in altitudes where you have no chance for successful landing after an engine failure. The user is taking all risk resulting from the use of this engine and he is aware of the possibility of sudden functional disturbances. [www.hirthengines.com](http://www.hirthengines.com)



**AUTHORIZED HIRTH ENGINE DISTRIBUTOR FOR NORTH AND CENTRAL AMERICA**  
 11160 SW Durham Lane, Suite 1 | McMinnville, OR 97128  
 Office: 503.434.6845 | Fax: 503.217.6080 | [www.nwuav.com](http://www.nwuav.com)



The materials contained in this brochure are provided for information only, "as is" without any warranties, express or implied, including warranties of merchantability, fitness of purpose and non-infringement of third-party intellectual property. While every effort is made to ensure that the information and specifications are accurate, the scope of information is limited by nature. NWUAV Propulsion Systems reserves the right to make changes to the Products described in the Product Brochure at any time, without notice. The application of our products is dependent upon the operating mission, environmental conditions, loads and other factors; none of which can be ascertained by this brochure. Any technical advice or information gleaned from this Product Brochure is given in good faith and without charge, and said advice and information is provided by NWUAV Propulsion Systems without assumption of liability or obligation. This brochure and the information it contains is the work product of NWUAV Propulsion Systems ("NWUAV"). All title, ownership rights and intellectual property rights in and relating to this brochure is owned by NWUAV or used by NWUAV through pre-authorization by third parties and cannot be used without its express prior written permission.